

BEREC IoT WORKSHOP

BEHIND THE SCENES, INDUSTRIAL RAIL

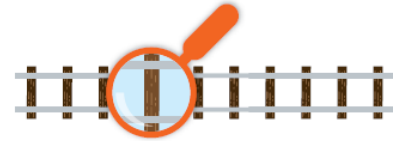


SNCF : A WORLD BENCHMARK FOR MULTIMODAL TRANSPORT SOLUTIONS

**3,000 STATIONS
SERVING**



**2 BILLION PEOPLE
A YEAR**



**30,000 KM
OF LINES**



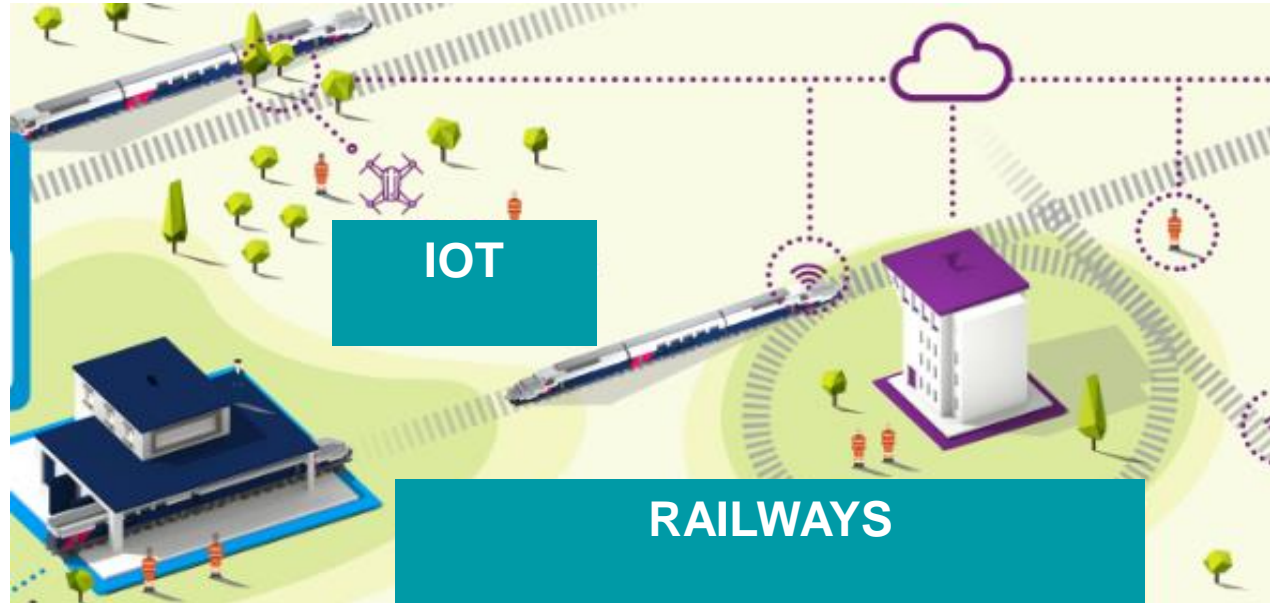
**15,000 TRAINS
RUNNING EVERY DAY**

**5 MILLION
PASSENGERS
A DAY**

CONNECTIVITY

IN THE HEART OF RAILWAY PRODUCTION

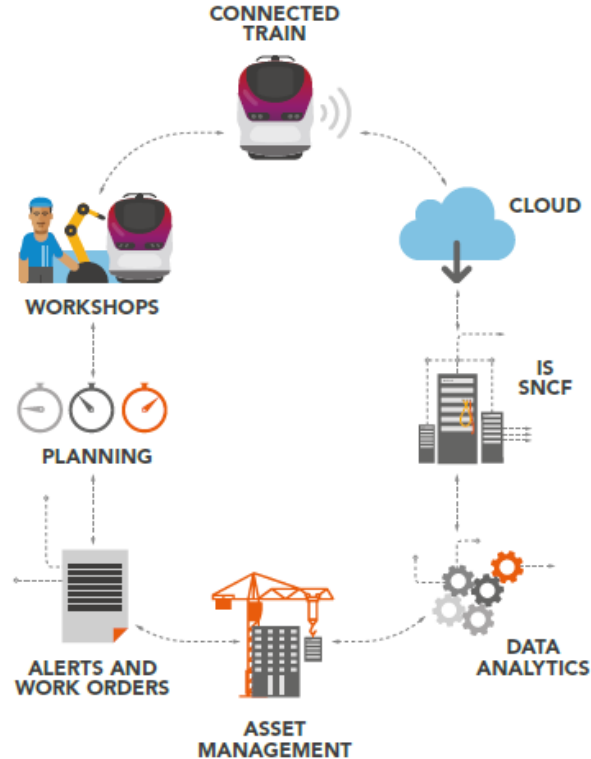
- Operating systems
- Connectivity for customers and employees
- IoT and Industrial Internet



INDUSTRIAL INTERNET

A REVOLUTION FOR RAILWAY MAINTENANCE

- Combining IoT with Big Data will bring us major gains in **safety and performance**



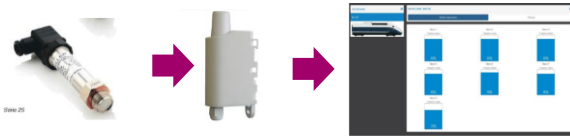
- Predictive maintenance will replace preventive maintenance

REMOTE DIAGNOSTIC OF OUR ROLLING STOCK

BEHIND THE SCENE : HOW TO MAINTAIN OUR LAVATORIES IN OUR TRAIN USING IOT SENSORS & LPWA NETWORKS ?

FEATURES

Gathering information using IoT sensors to enable remote diagnostics of water tank level



PRESSURE
SENSOR

TRANSMITTER
Sigfox ou LoRaWAN

DIGIDAG PLATFORM

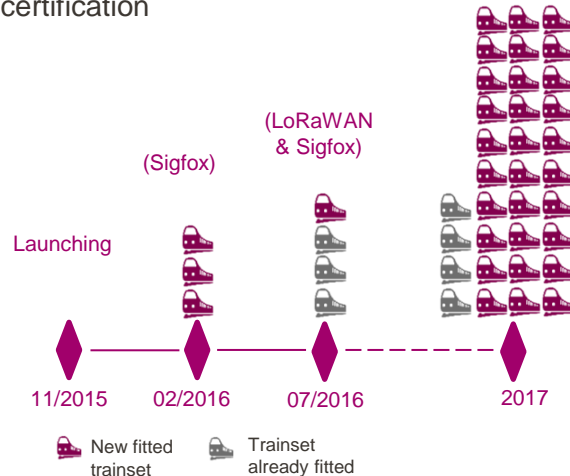
3 gains :

- Savings of **maintenance costs**
- Increased **availability for the user**
- Reduced **maintenance operation time**



ROLL OUT

30 additional trains and a permanent certification



LEARNINGS



When it seems too easy, beware !

LPWA networks for train to ground communication are not ready yet.

What to expect from LTE-M and NB-IOT coming soon ?

CONNECTING OUR NETWORK

BEHIND THE SCENE : THE CUTTING EDGE THERMOMETER

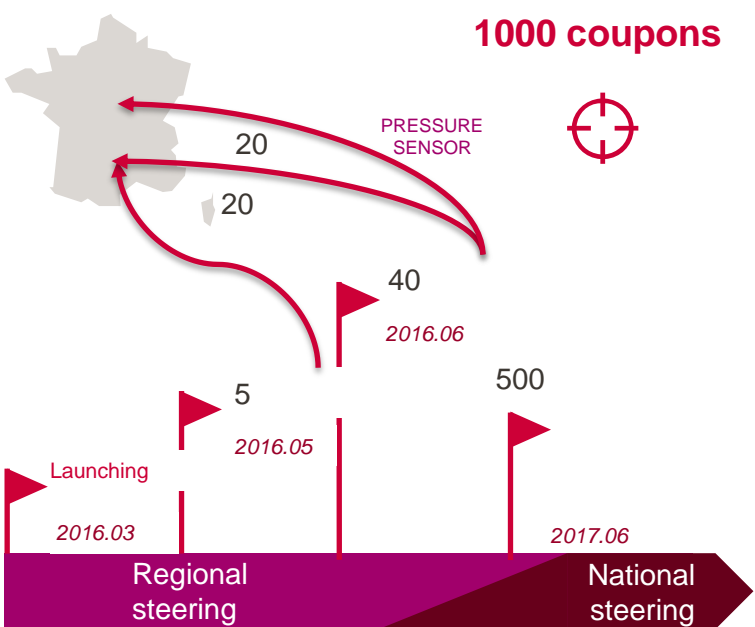
FEATURES

- ✓ Warning of abnormal temperature (high / low) to trigger a targeted visit
- ✓ Geolocation of each sensor
- ✓ Autonomy of 2 years

Reliable and quality telemetry with traceability
Productivity

**500 COUPONS BEING DEPLOYED
ESTIMATED VOLUME OF HOURS
53H / MONTH SAVED**

ROLL OUT



LEARNINGS

- How to produce the highest technology on short series in good financial conditions ?



